

BONNITA DOODLES

Unique art created with passion, pencils & pens



Use these various shapes to build up your confidence and experience of cutting.

CUT AWAY THE WHITE!

ALL WORDS ARE PRINTED IN REVERSE - this is so the grey can not be seen when you turn your cut over.

Hold your knife like you would a pen, take it slow and relax. If you cut off something you shouldn't have its ok! It's only paper after all. Any questions please come and find me in my Facebook - Bonnita Doodles Artshare group.

To get started you will need the following equipment which can be found in your local art and craft store or online.

Self healing or Glass cutting mat
Cutting blades - I recommend 10a
A scalpel or Art Knife - I recommend Fiskars Art knife
Ruler

Tweezers
Tape
Glue or Sticky dots
Backing paper

A self-healing cutting mat is essential to protect your table. It's best to get the largest one you can so you have plenty of working space. It's very awkward to make a papercut on a too-small cutting mat.

Plastic rulers are great for measuring and drawing, but if you try to cut along them with a scalpel, you'll end up shaving chunks off your ruler! A metal ruler ensures you can cut a nice straight line.

There are many different scalpels on the market. If you're going to be doing detailed cuts, then you want something that feels comfortable in your hand for long periods of time.

For this reason, I prefer a rounded handle with a nice soft grip. This scalpel also has the advantage of being able to take any blade.

If you already have a flat metal scalpel, I recommend wrapping the handle in masking tape to make it easier and more comfortable to hold. The last thing you want is hand-cramp halfway through creating your art work.

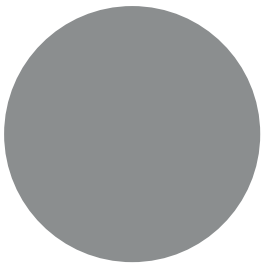
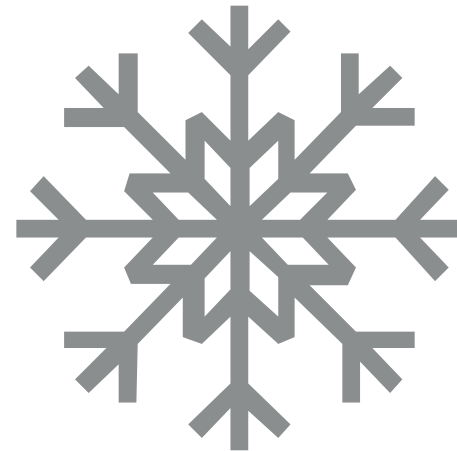
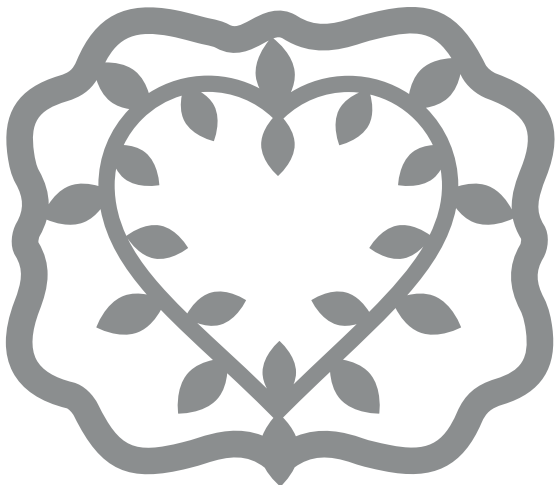
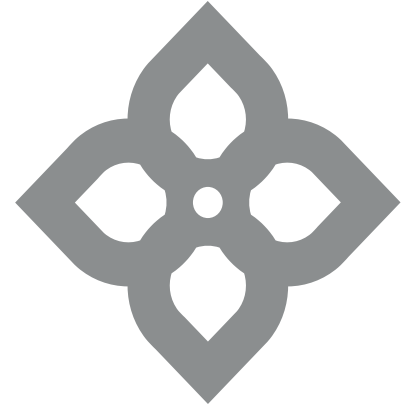
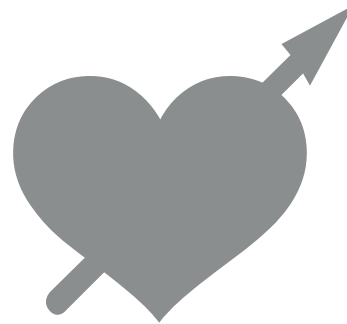
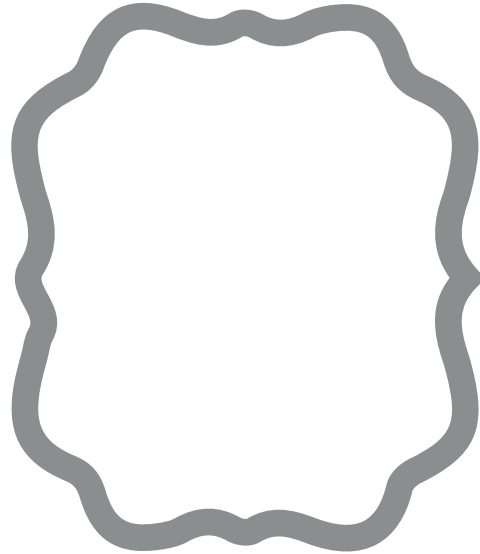
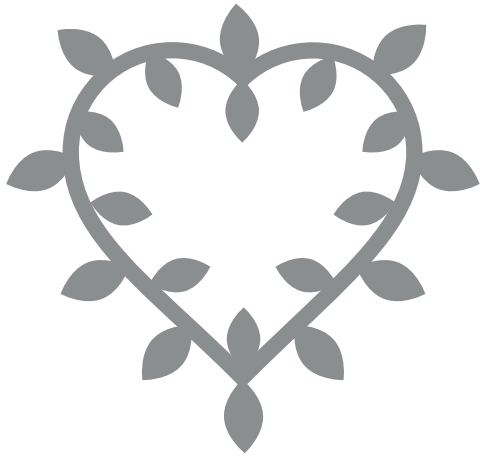
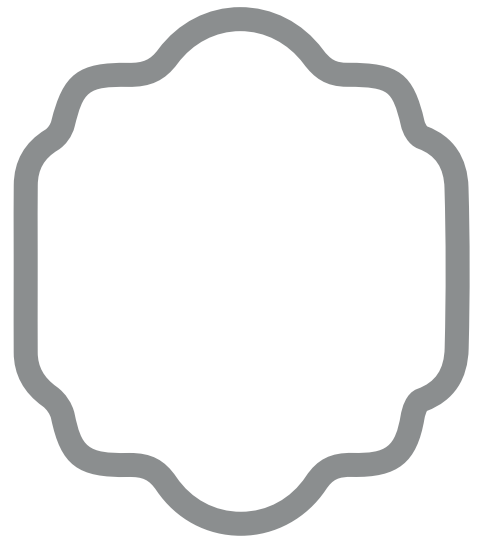
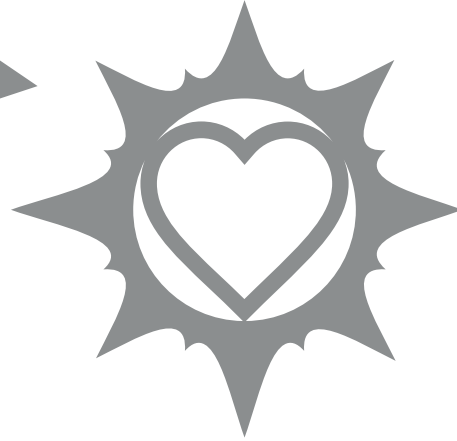
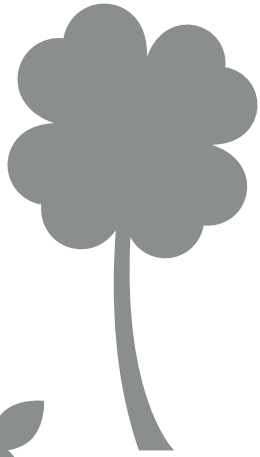
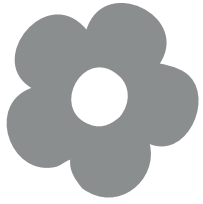
Once you've become proficient in papercutting, you may want to try a swivelling scalpel. These are fabulous inventions but they can be very tricky to control. It's much easier to start with a fixed blade.

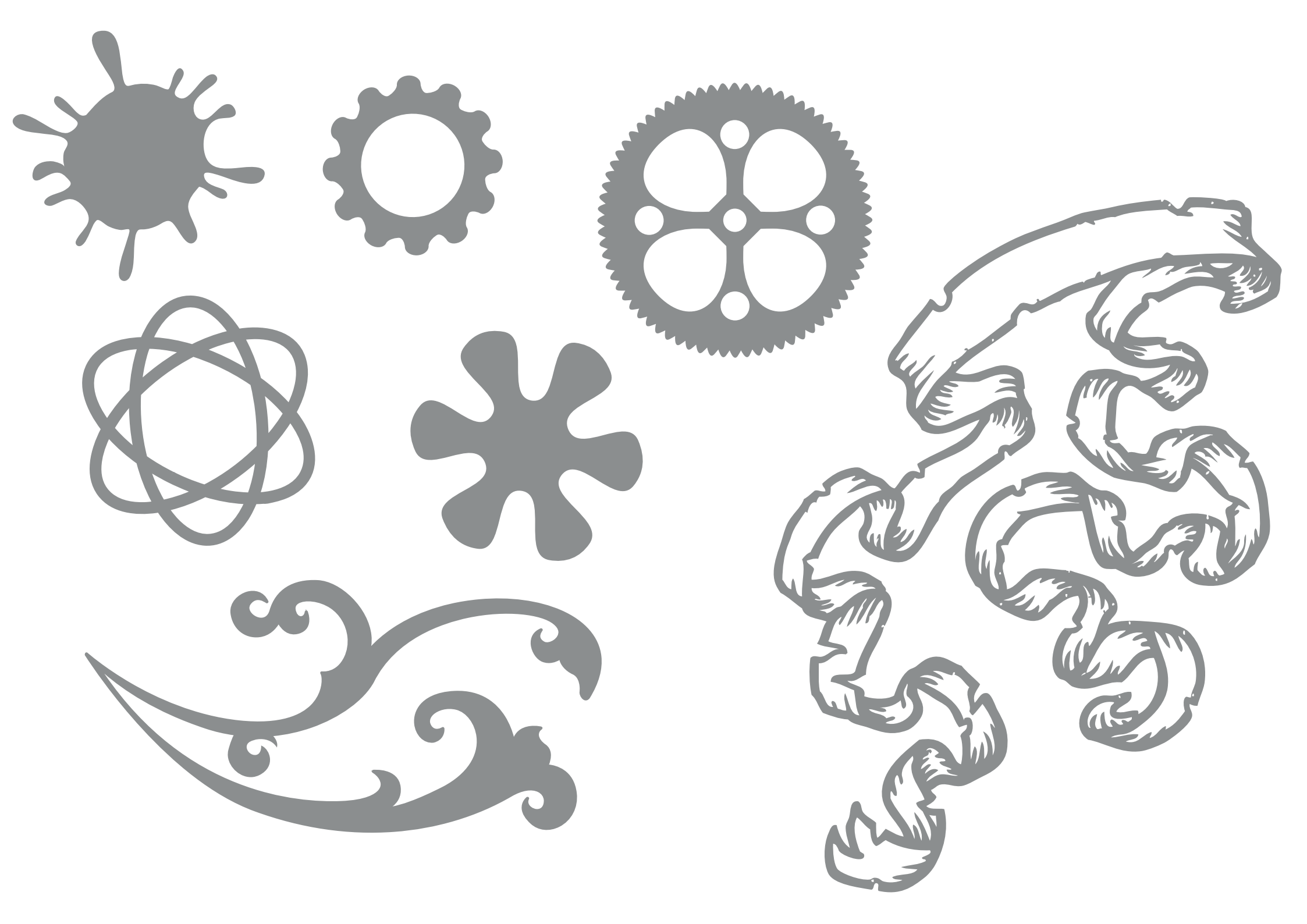
Any scalpel blade can be used to create a papercut. However, as you progress with your creations you may find yourself becoming more fussy. The ideal blade is strong, with a fine point, and has just the right amount of flexibility for negotiating curves. Swann Morton 10A blades tick all the boxes for detailed papercutting. When your paper starts to snag on your blade its time to change blades! Frequent blade changes ensures clean cuts. You'll need plenty of rough paper for creating your designs, and then of course some special paper for your final cut. The type of paper you use for your final cut depends on the result you require. To create a flat piece to be framed, you could use something as simple as copier paper. If you want to show off your cut's three dimensions then something sturdier is preferable. Watercolour paper is great because it's easy to cut but it's also strong enough to stand up in a box frame.

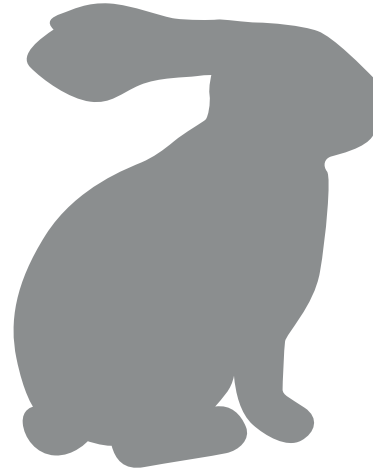
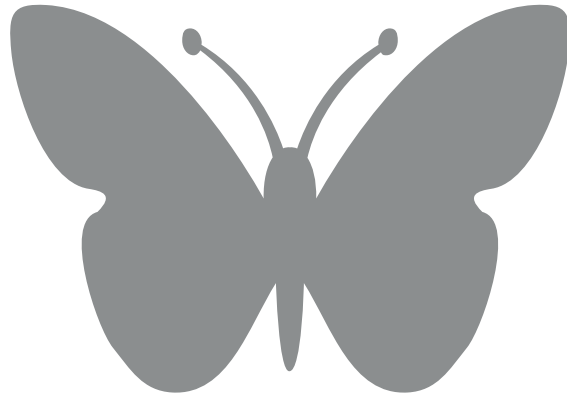
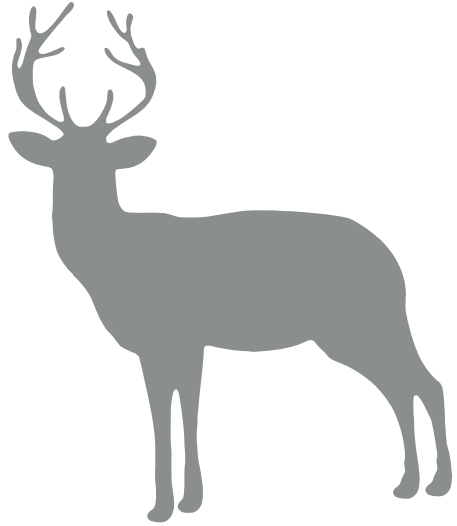
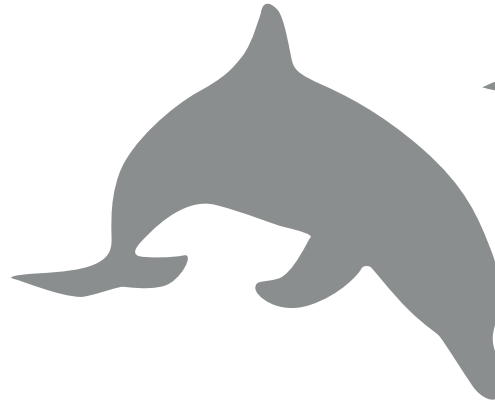
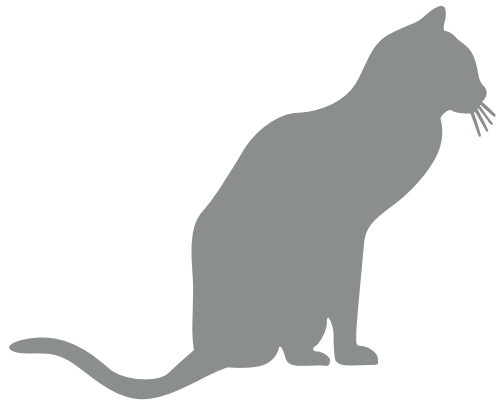
If you plan to frame your papercut design, it's important to consider what's going behind it. The obvious choice is a sheet of contrasting coloured paper, but you could also use fabric, newsprint or pages from an old book. You're only limited by your imagination (and what fits in the frame, of course!).

Practice!

Now it's time to start practicing cutting lines and simple shapes. You want to cut deeply enough that you go through the paper in one smooth cut, but not so deep that you get stuck into your cutting mat. This will not only make it difficult to cut smoothly, but you could lose the point of your blade in the mat!







Thank You



Dreams	Wish
Laughs	Trust
Love	Hope
Focus	Courage
Goal	Win
Beauty	Shine
Strand	
Brave	

LOVE
 LAUGH
 DREAM
 INSPIRE
 FOCUS
 GOAL
 BRAVE
 STRONG
 BEAUTY
 WIN
 COURAGE
 HOPE
 FAITH
 HUGS
 TRUST
 WISH

